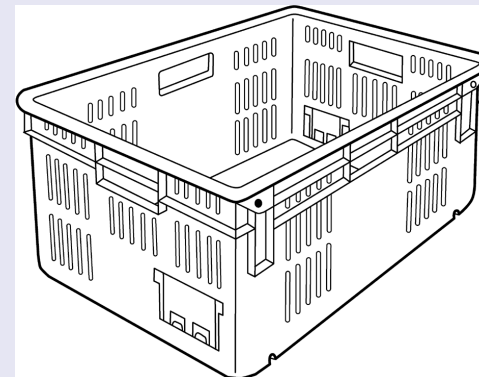
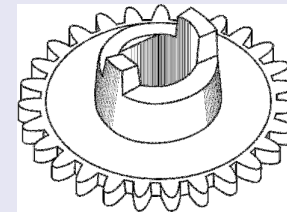
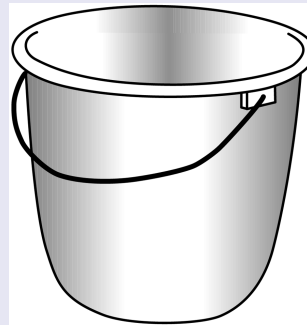
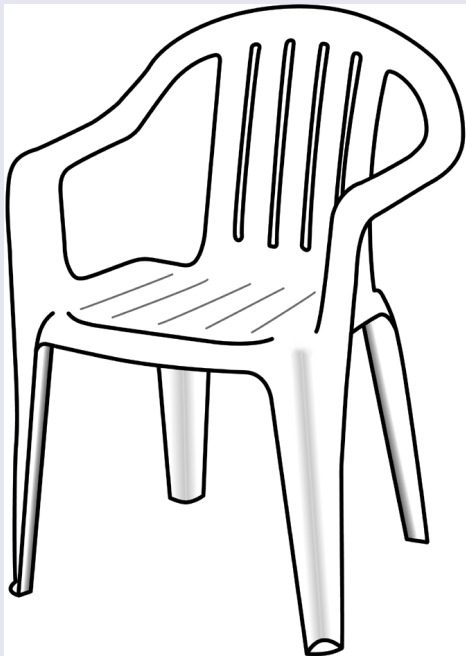


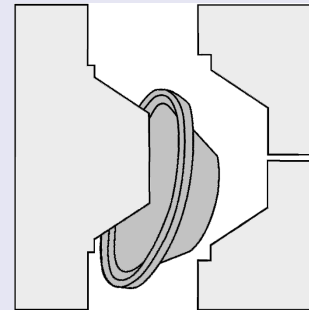
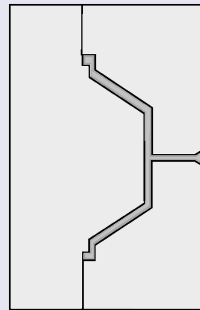
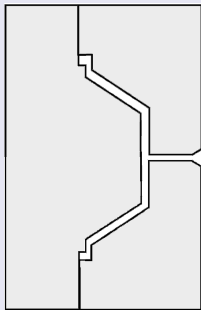
Injection Moulding

- a way to make solid, shaped, individual products
- used to produce a very wide range of different shapes and sizes

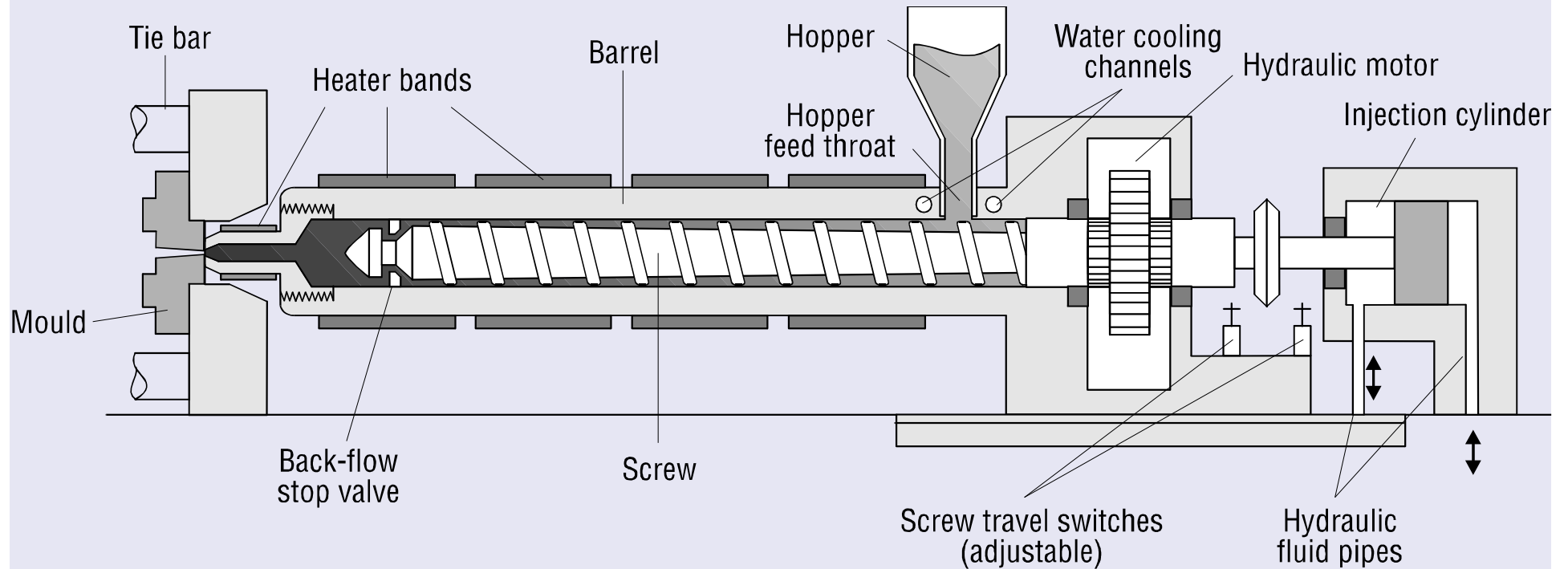


Injection Moulding

- involves injecting hot, molten plastic into a closed mould
- the mould forms, shapes and cools the plastics material into the required product shape
- the product is ejected from the mould



Injection Moulding Machine principles



Injection Unit

- Injection unit has an injection screw which rotates in a close-fitting fixed steel barrel
- barrel is heated and accurately temperature controlled
- plastics materials are heated, compressed, sheared and mixed as they are moved along the screw
- while the screw rotates the nozzle is blocked and plastics material accumulates at the front of the screw
- the screw is forced back a set distance and screw rotation is stopped
- with the mould shut and clamped, the screw is pushed forward injecting the material into the mould

Injection Moulding Machine

- major components

